



HYCON TECHNOLOGY

HY10000-WK08x Integrated Writer Online Update Manual

Table of Contents

1. Package Contents	4
2. Safety Precautions	5
3. Writer Introduction	6
4. Software Installation	7
4.1. Software Installation Requirements	7
4.2. Software Installation Steps.....	8
5. Operation Method.....	9
6. Troubleshooting	11
7. Revisions	12

Attention:

- 1、HYCON Technology Corp. reserves the right to change the content of this datasheet without further notice. For most up-to-date information, please constantly visit our website: <http://www.hycontek.com>.
- 2、HYCON Technology Corp. is not responsible for problems caused by figures or application circuits narrated herein whose related industrial properties belong to third parties.
- 3、Specifications of any HYCON Technology Corp. products detailed or contained herein stipulate the performance, characteristics, and functions of the specified products in the independent state. We does not guarantee of the performance, characteristics, and functions of the specified products as placed in the customer's products or equipment. Constant and sufficient verification and evaluation is highly advised.
- 4、Please note the operating conditions of input voltage, output voltage and load current and ensure the IC internal power consumption does not exceed that of package tolerance. HYCON Technology Corp. assumes no responsibility for equipment failures that resulted from using products at values that exceed, even momentarily, rated values listed in products specifications of HYCON products specified herein.
- 5、Notwithstanding this product has built-in ESD protection circuit, please do not exert excessive static electricity to protection circuit.
- 6、Products specified or contained herein cannot be employed in applications which require extremely high levels of reliability, such as device or equipment affecting the human body, health/medical equipments, security systems, or any apparatus installed in aircrafts and other vehicles.
- 7、Despite the fact that HYCON Technology Corp. endeavors to enhance product quality as well as reliability in every possible way, failure or malfunction of semiconductor products may happen. Hence, users are strongly recommended to comply with safety design including redundancy and fire-precaution equipments to prevent any accidents and fires that may follow.
- 8、Use of the information described herein for other purposes and/or reproduction or copying without the permission of HYCON Technology Corp. is strictly prohibited.

HY10000-WK08x Integrated Writer Online Update Manual

1. Package Contents

The following is the package description of HY10000-WK08D integrated writer:



<i>Model No.</i>	<i>Part Name</i>	<i>Description</i>	<i>Quantity</i>
HY10000-WK08D	1. HY10000-WK08D	Integrated Writer	1
	2. Cable line	USB Type A to Mini B Cable	1
	3. Programming line	6pin/2.0 (2.0mm pitch)	1
	4. Programming line	4x2pin/2.54 (2.54mm pitch)	1
	5. Power Supply	Output: DC 5V(USB Mini B)	1

2. Safety Precautions

- Do not place heavy objects on the display panel, in order to avoid damage caused by stress.
- Place the application display boards at steady place, so as to avoid falling damage.
- Do not use this product with the input voltage which is not meeting the electrical specifications, in order to avoid working abnormally or damage
- Avoid application display boards being touched by liquid, dirt and avoid being exposed to moisture during operation. This application should be kept in a dry environment, so as not to affect the function and performance
- Remove the power supply when not using it.
- When following status occurred, please remove the power supply immediately, and contact our engineer.
- Power Supply line is worn or damaged.
- Power source (battery) connected but no any light on while operating.
- Component off.

3. Writer Introduction

The integrated writer is developed by HYCON and can be used for the programming of the **HY10P, HY11P, HY12P, HY13P, HY15P, HY17P, HY16F** series of products. you can download the code through the application software “Burner Transformer” to the writer; support the use of online application software to programmed the chip, also supports mass production of off-line programming chip process; this manual describes how to use the “Burner Transformer” application software to update the firmware inside the writer when the integrated writer is used in different series of products.

4. Software Installation

4.1. Software Installation Requirements

The minimum system configuration required to run the “Burner Transformer” software:

- PC Hardware Requirement:

PC compatible with (PENTIUM®) system
256MB Memory (recommend 512MB)
500MB Hard disk

- Support Chip Product Model:

HY10P, HY11P, HY12P, HY13P, HY15P, **HY17P**, HY16F series products

- Hardware Support Model:

HY10000-WK08x integrated writer (**WK08x means WK08C and WK08D integrated writer. WK08C is an old model, WK08D is currently main model**)

- Software Version Support:

Burner Transformer V1.1 above (**Note : Burner Transformer V1.7 above version, it no longer supports HY16F series. HY16F series, please direct use HY16F Writer V3.8.1 option (Update Firmware) to update Writer’s F/W.**)

- Operating System Support:

Windows XP (32 bit), Windows 7(32 bit/64 bit), Windows 8(32 bit/64 bit),
Windows 10(64 bit)

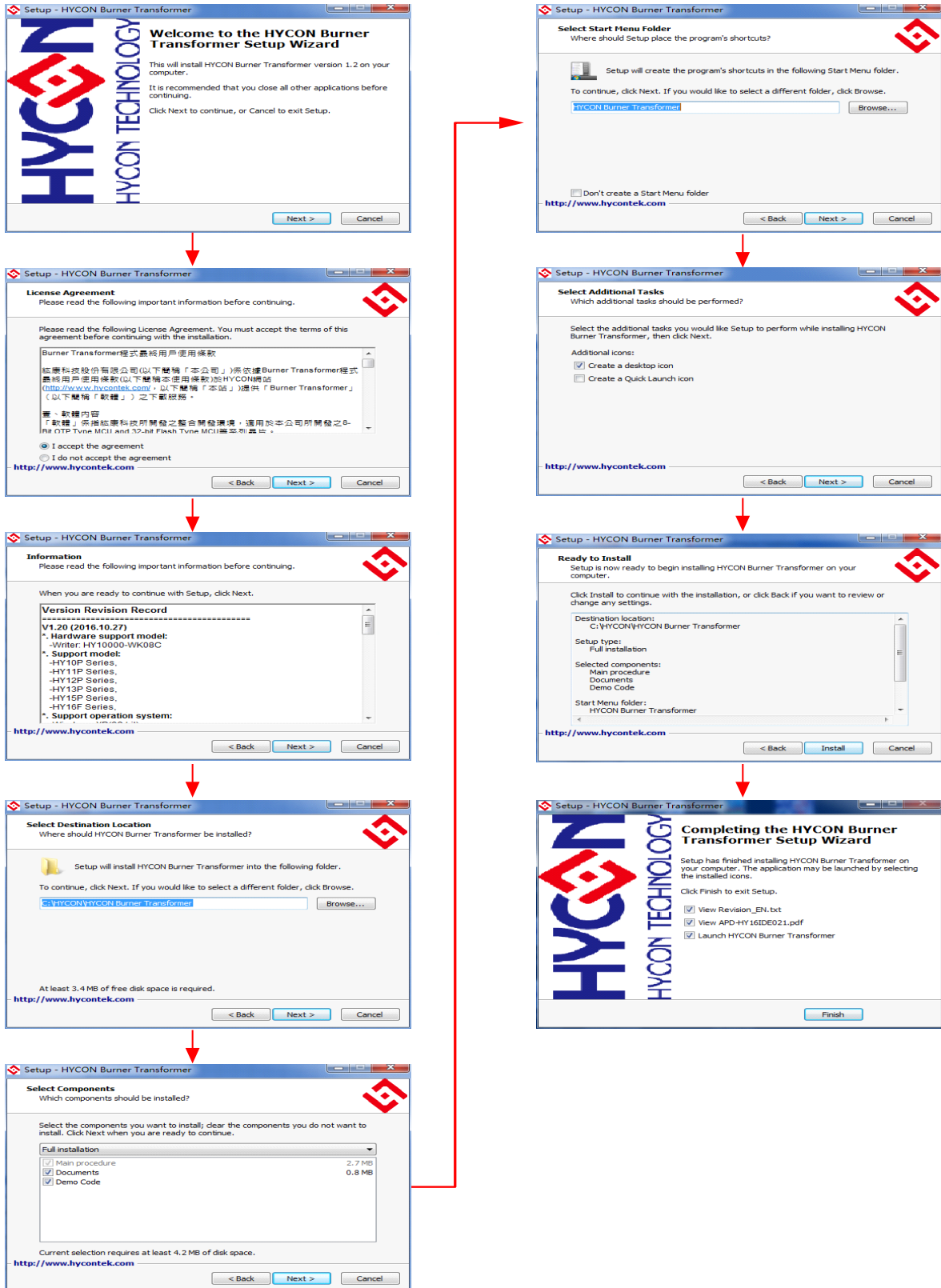
- Apply the following interface modes:

USB Port

-Software Installation Method:

After decompressing the “Burner Transformer” installation file, run Setup.exe and follow the steps in Section 4.2 to install the application software

4.2. Software Installation Steps



5. Operation Method

The following steps explain how to update the HY10000-WK08D integrated writer internal firmware through the “Burner Transformer” application software. after the update, the writer can support the chip programmed operation of the product model:

Step1. Setups

Short the pin 1 and pin3 of the 8PIN socket on the HY10000-WK08D integrated Writer side program port, as shown in Figure 5-1.

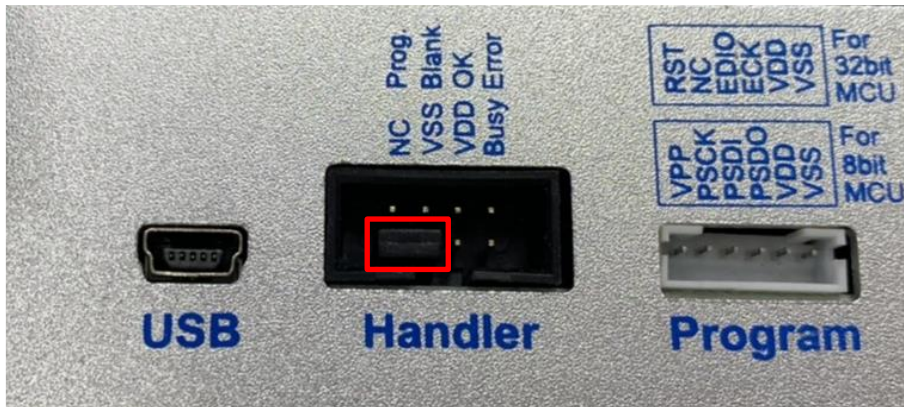


Fig. 5-1

Step2. Connection

Connect the HY10000-WK08D integrated Writer through the USB cable to the computer (at this time Writer LED lights are all off), run "Burner Transformer.exe" to open the application, the interface as shown below, click the button "Connect".

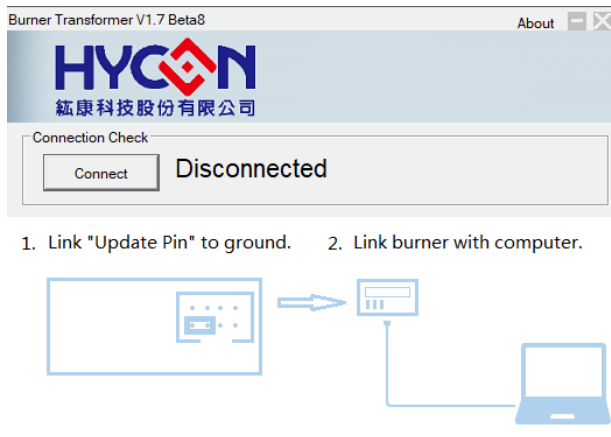


Fig. 5-2

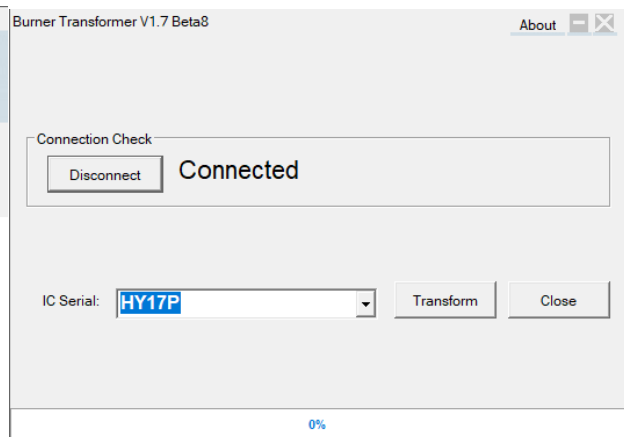


Fig. 5-3

Step3. Start to update

- In the "IC Serial" drop-down menu to select the product model to upgrade FW, when the selected model and then click "Transform", It will start to update.
- If the update is OK, the progress bar will display 100% (Figure 5-4), then remove the 8PIN socket's pin1 and pin3 short-circuit caps in the side Program port to complete the update.

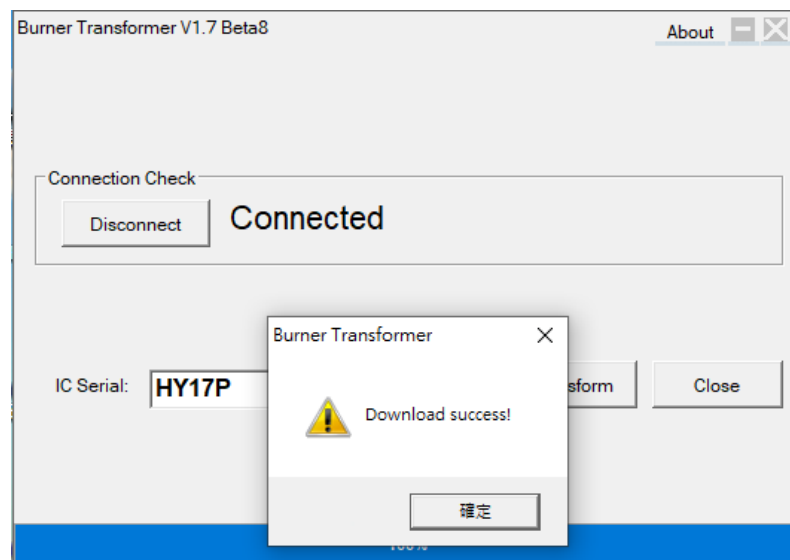


Fig. 5-4

6. Troubleshooting

When the firmware of the HY10000-WK08D integrated Writer is updated, it needs to be used in accordance with the operating procedures. If the Writer is not connected, turn off the software and re-operate it in accordance with Chapter 5.

HY10000-WK08x Integrated Writer Online Update Manual

7. Revisions

The following describes the major changes made to the document, excluding the punctuation and font changes.

Version	Page	Summary of Changes
V02	ALL	First version release
V03	ALL	<ol style="list-style-type: none">1. Modify the title from WK08C to WK08x2. Modify the package contents from HY10000-WK08C to HY10000-WK08D3. Add the support chip product model HY17P. Correct the hardware support model and software version support description.4. Modify pictures 5-1, 5-2, 5-3, 5-4.